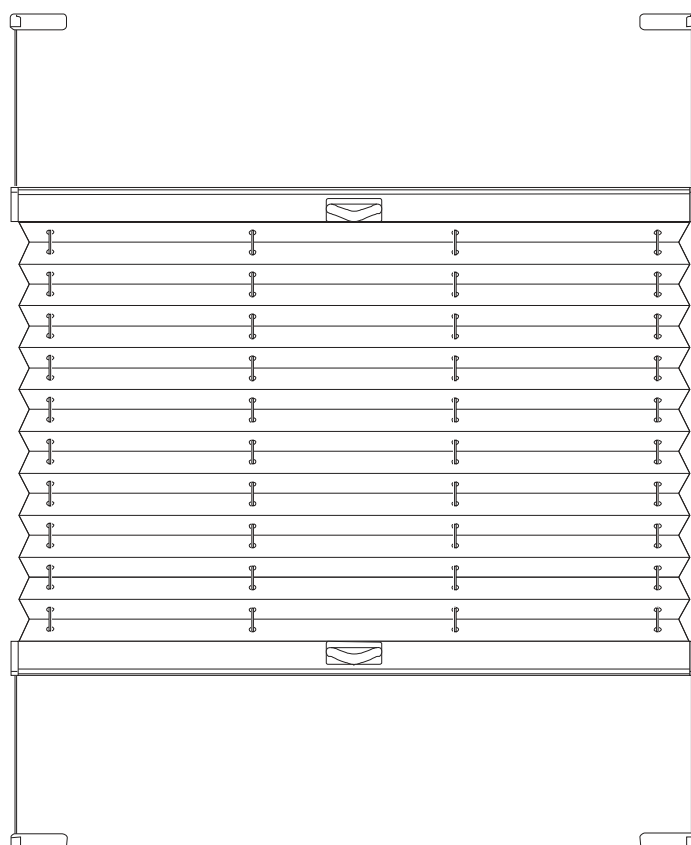
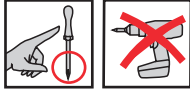


Guía de instalación de la cortina plisada sistema VS2

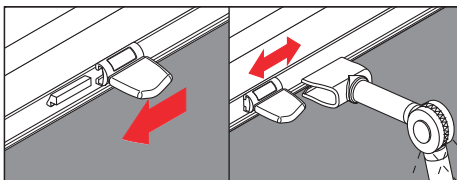
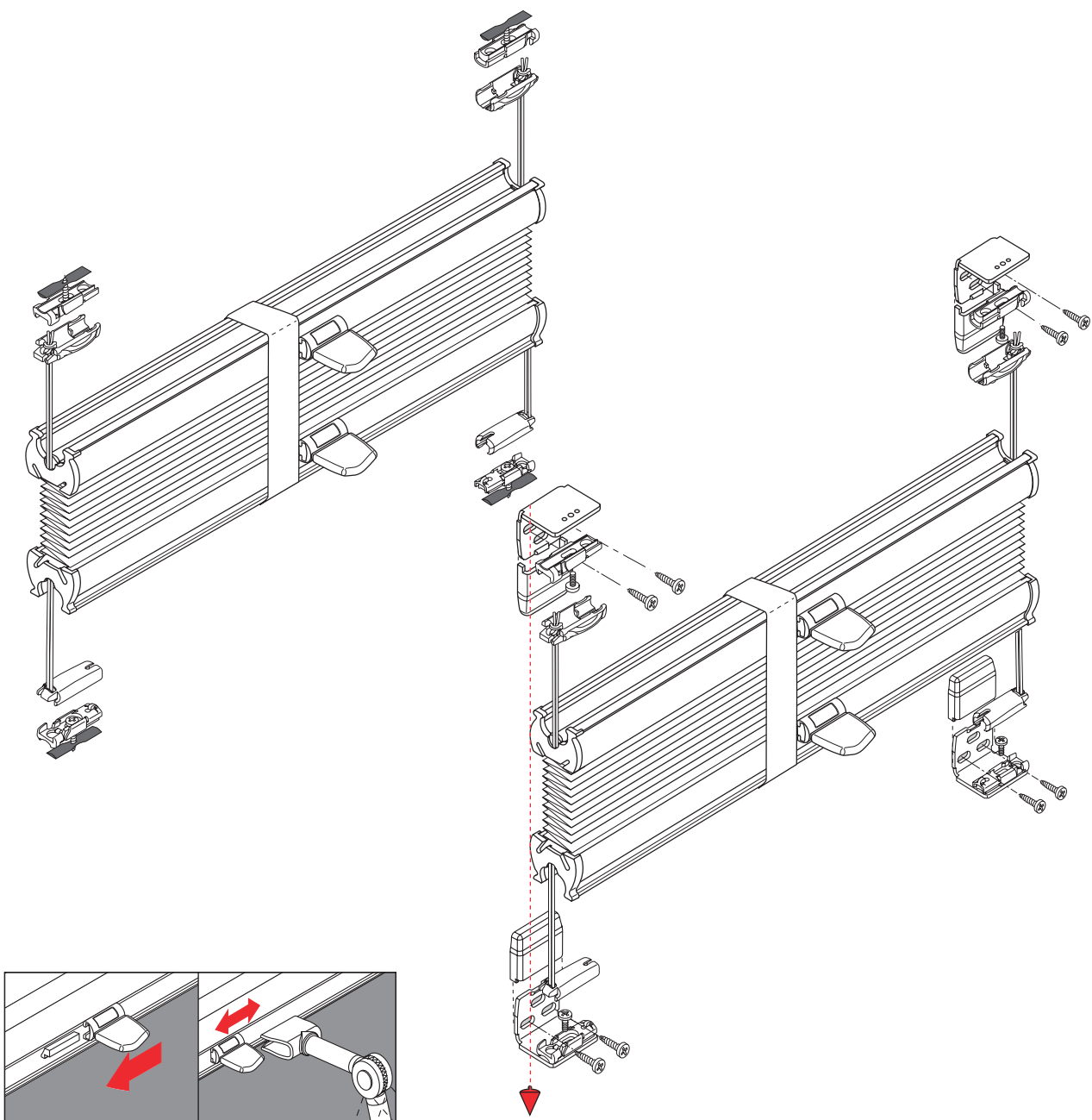
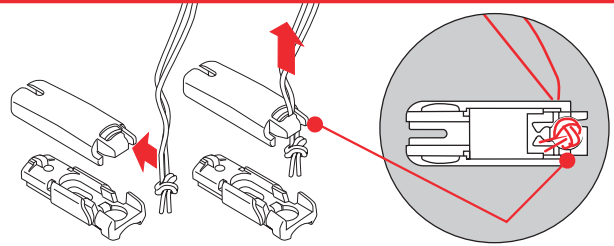
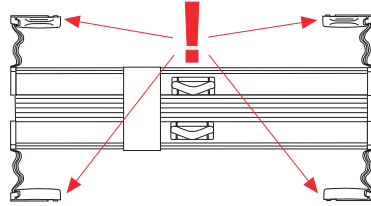
VS2

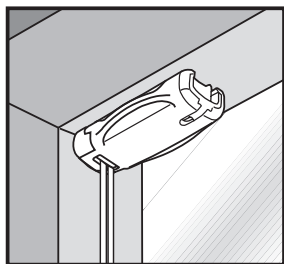


Wichtig! Bitte mit der Pflegeanleitung aufbewahren!
Important! Please keep together with care instructions!
Belangrijk! A.u.b. bij de gebruiksaanwijzing bewaren!
Important! Conserver ensemble avec les conseils d'entretien!
Importante! Conservare con le istruzioni per la manutenzione!
Ważne! Proszę przechowywać z instrukcją pielęgnacji!
¡Importante! Conservar junto con la instrucción de mantenimiento.

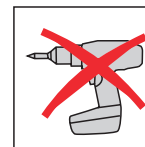
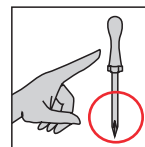
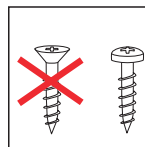


Wichtig!
Important!
Let op!
Importante!
Ważne!
¡Importante!

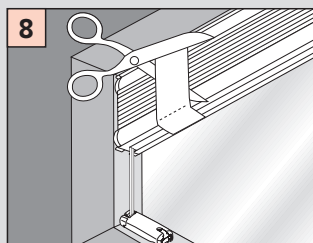
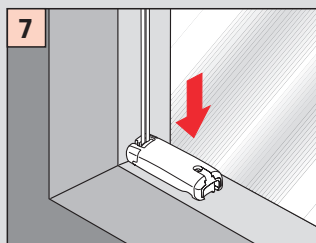
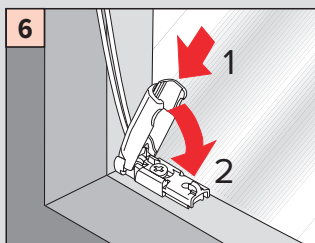
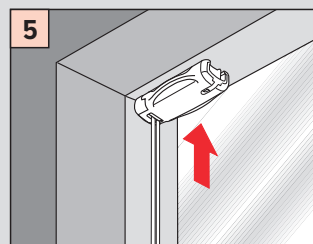
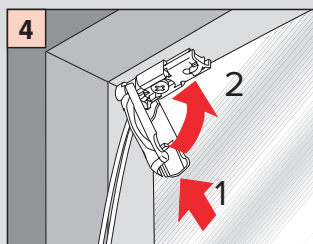
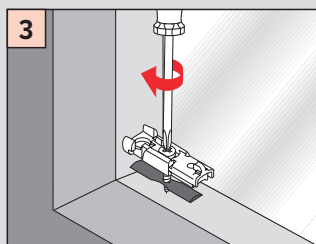
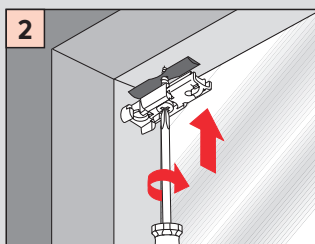
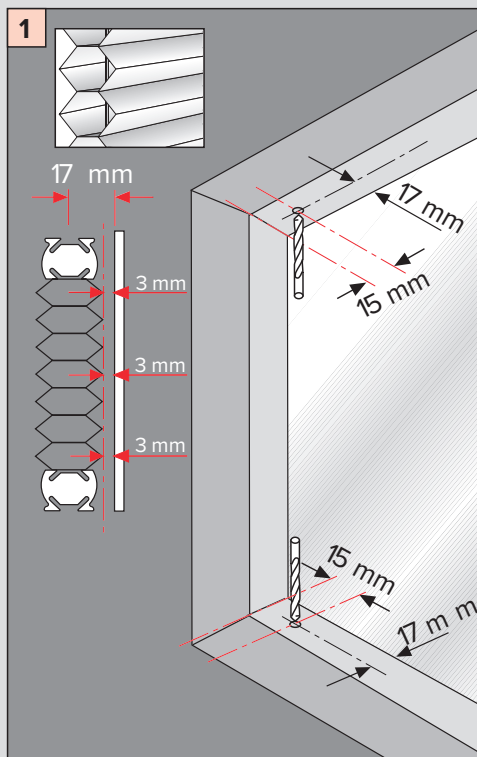
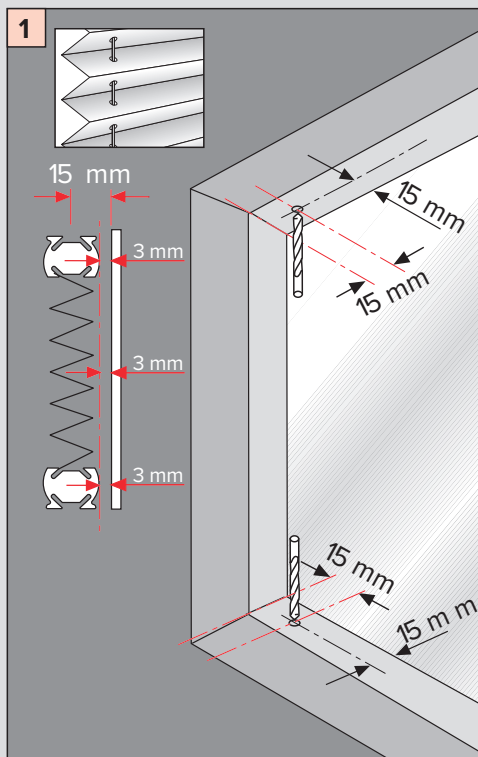




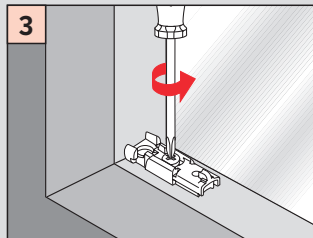
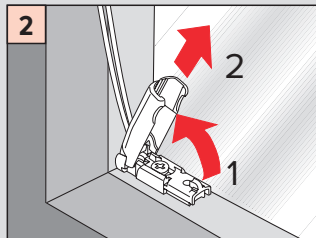
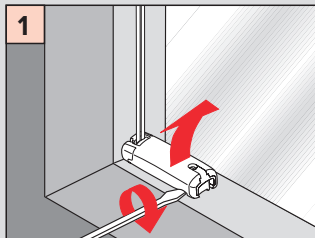
Falzmontage,
Top fixing,
Bevestiging in de sponning,
Dans la feuillure,
Montaggio nella piegatura,
Montaż w świetle szyby,
Montaje en la luz de cristal

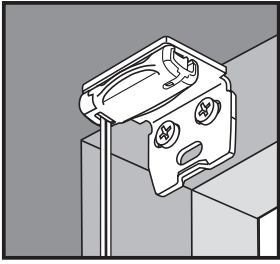


Montage-Fitting
Montaggio-Montaż
Montaje

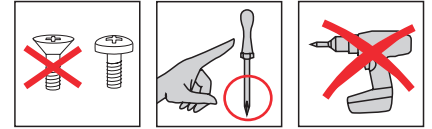


Demontage-Disassembly-Démontage-Smontaggio-Demontaż-Desmontaje





**Winkelmontage,
Face fixing,
Bevestiging met hoeksteun,
Avec equerre de fixation,
Montaggio mediante angolare,
Montaż frontalny (nawierzchniowy),
Montaje frontal**



**Montage-Fitting
Montaggio-Montaż
Montaje**

**Demontage-Disassembly-Démontage
Smontaggio-Demontaż-Desmontaje**